

*Fast, Automatic, Industrial & Productive*

## Stress\_Tester Pharma

Inline & Offline Stress Tester  
for Primary Pharma Packaging

# Stress\_Tester Pharma

Inline & Offline Stress Tester for Primary Pharma Packaging



*"Stress\_Tester  
Detects the Residual  
Stress in Primary Pharma  
Packaging such as:  
Plastic/Glass bottles, Vials  
& Transparent items"*

## About Stress\_Tester

Using the state of the art image acquisition and elaboration, the instrument **detects not visible residual mechanical stress in primary pharmaceutical packaging** and increase the production quality, product safety, and reduces costs.

## Industrial & Productive

Stress\_Tester is a fast, compact, rugged, accurate and **extremely easy-to-use equipment**, without any mechanical movement or adjustment, **designed for hard industrial environment** and heavy duty cycle use, perfect for massive production quality inspection close to the line control or at incoming review.

The user can visually control the positioning of the item while watching the **real-time video** streaming coming from the internal camera.

## Features & Benefits

- Automatic Tester for Check Residual Mechanical Stress in Primary Pharma Packaging
- Complex Analysis in Single Acquisition - Discover the not visible material properties
- Full Block of External Light - Closable Measuring Chamber
- Continuous Auto-Calibration - No Interruption of Analysis Cycles
- Fast Analysis in Few Seconds
- Static Device Without Moving Parts
- Ready to In-line use with I/O Module (optional)
- Rugged Equipment, Suitable for Laboratory and Production line
- 100% Made in Italy, High Level of Quality and Innovation

## Dedicated All-in-One PC



- Powerful All-in-One PC
- Full HD Touchscreen
- Monitor resolution 1920x1080 pixels
- Height adjustable & tilt swivel rotate position
- Genuine Windows 11 PRO 64-bit
- Pre-installed TeamViewer app Support

## Dedicated Software



- Easy-to-Use with an intuitive GUI
- Camera live view for precise positioning
- Full automatic data report
- Hardware License Key

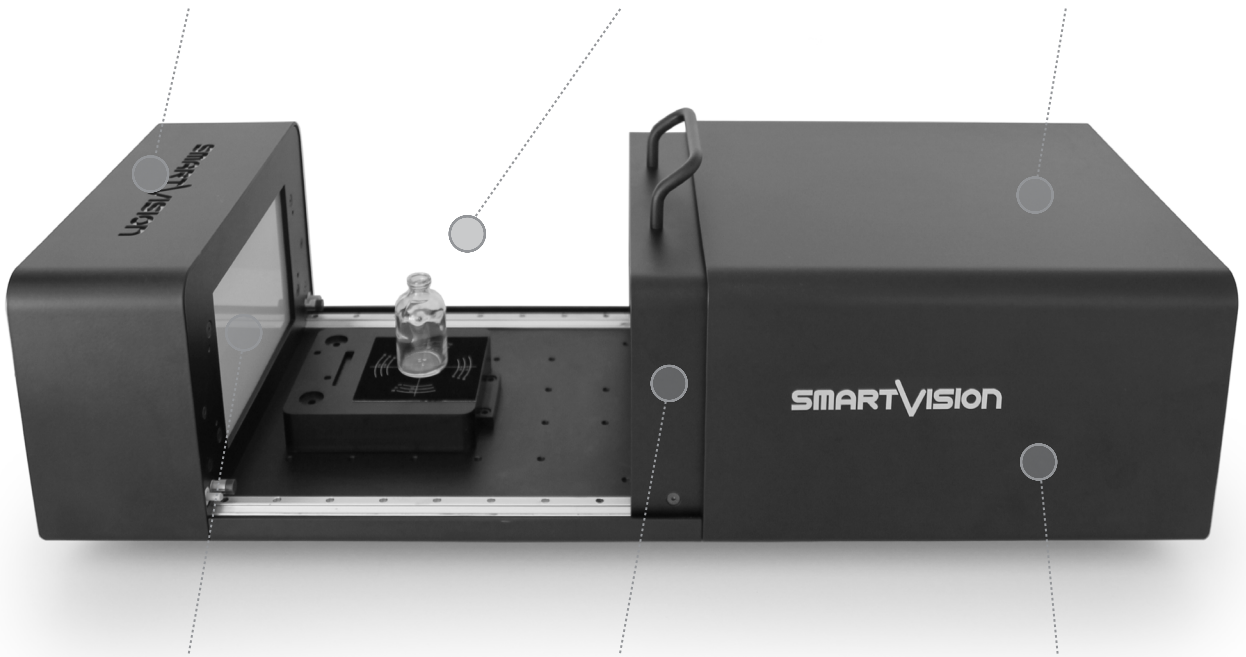
# Stress\_Tester Pharma

## Hardware & Software Features

Multi-Color Active Logo

Closable Measuring Chamber

Continuous Auto-calibration



Backlight LSM

Smart Sliding Door

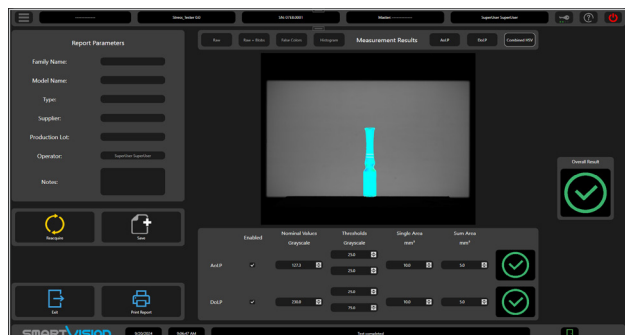
Rugged & Stable Industrial Case



**Example 1:** Residual mechanical stress check in Plastic Preform



**Example 2:** Residual mechanical stress check in Glass Bottle



**Software interface:** The software is developed for a fast and easy analysis of the samples



**Backlight LSM:** optimized light emission for real-time visual inspection and better test performance

# Stress\_Tester Pharma

## Technical Specifications

Dimensions (mm)	880x320 H.250 (upper door handle included)
Weight (kg)	20 (excluding PC and tools)
Operation Ambient	+10° to +40° C
Power Supply	110-240 Vac   50-60 Hz
Power Consumption	2 A
Communication Interface	USB 3
Case	Black Opaque painted Anodized Aluminum
Optional PC Device	Powerful All-in-One PC, Full HD, Monitor resolution 1920x1080, Windows 11 PRO 64-bit
Software Interface	Language: English
User Management	User, SuperUser, Maintainer, Administrator (with password login and editable rights)
Data Report	xlsx, xls, pdf
Print Report	Windows installed Printer (optional pdf), xps
Statistical Analysis	Ready to connect with SPC software
PC Software Backup	USB stick containing the backup system (bootable system startup)
Online Support	Pre-installed TeamViewer app Support

Reach Excellence in Quality Control  
with SmartVision's Technology



©2023, SmartVision. Technical specifications are approximated and are subject to change without notice. Printing errors excepted.

**SMARTVISION**  
IN LINE QUALITY

T. +39 0432 484765 | info@SmartVision.it | www.SmartVision.it | SmartVision S.r.l. Italy